

# FILTAIR® SWX Series

Issued June 2012 • Index No. AY/3.2



## Quick Specs

### Industrial Applications

Schools and Training Facilities  
Manufacturing and Fabrication  
Fixed Welding Cells/Stations

### Processes

Stick (SMAW)  
Flux-Cored (FCAW)  
MIG (GMAW)  
TIG (GTAW)

**Filter Media** 490 ft.<sup>2</sup> (45.52 m<sup>2</sup>)

**Accu-Rated™ Airflow** 875 CFM (413 L/sec.)

**Sound Level** Approximately 75 dBA at 5 ft. (1.5 m)

**Motor Specifications** 1 HP, 3450 RPM

**Input Power** 115 V/1-Phase/60 Hz at approximately 11.9 A

**Dimensions** H: SWX-D: 29 in. (737 mm)  
H: SWX-S: 33 in. (838 mm)  
W: 27.25 in. (692 mm)  
D: 33 in. (838 mm)

**Extraction Arm** 8-in. (203 mm) diameter  
7-, 10-, and 12-ft. lengths (2.1, 3 and 3.7 m)

**Cabinet Net Weight** SWX-D: 130 lb. (59 kg)  
SWX-S: 195 lb. (88 kg)

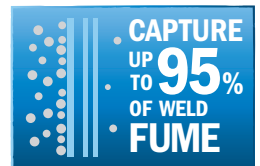
## The Power of Blue.®



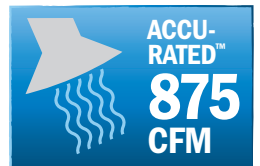
**Wall- or column-mounted fume extraction systems designed specifically for welding.**

The powerful high-volume system with a MERV 15 high-efficiency filter is ideal for fabrication shops, manufacturing and training centers.

Have a certified industrial hygienist test the air in your facility to determine equipment requirements and ensure adequate protection from contaminants.



Standard high-efficiency filter designed to capture weld fume



Better suction for a cleaner work space



FitTek™ XL cleanable filters last longer

Disposable filter (SWX-D) and self-cleaning filter (SWX-S) models available.

See page 3 for optional dual-arm package.



Fume extractor is warranted for 1 year, parts and labor.



Meets both UL and CSA standards.



**Miller Electric Mfg. Co.**  
An Illinois Tool Works Company  
1635 West Spencer Street  
Appleton, WI 54914 USA

**Equipment Sales US and Canada**  
Phone: 866-931-9730  
FAX: 800-637-2315  
International Phone: 920-735-4554  
International FAX: 920-735-4125

**Website**  
MillerWelds.com



## Cleaner Air with FilTek XL Filters

The FilTek XL filter's higher MERV rating means unrivaled filtering performance.

Filters are rated on a MERV scale, which measures filter efficiency based on particle count. MERV ratings range from 1–16, with 16 being the best at filtering small particles—such as those found in weld fumes. The vast majority of weld fumes are less than one micron in diameter, or roughly 1/100th the width of a human hair.

Filters in common air filtration systems often have MERV ratings between 7–11. FilTek XL filters are rated at class-leading MERV 15–16 to capture up to 95 percent of weld fume particulates.

## Filter Media Performance Summary

FilTek XL filters have the highest efficiencies and lowest pressure drops to capture better, last longer, and lower operating costs.

## MERV Comparison

Applicable Weld Fume MERV Rating Categories <sup>1</sup>	Particle Size Range Efficiency % <sup>2</sup>		
	0.3 to 1 µm	1 to 3 µm	3 to 10 µm
10	Not Rated	50–65%	85%
11	Not Rated	65–80%	85%
12	Not Rated	80–90%	85%
13	<75%	90%	90%
14	75–85%	90%	90%
15 Miller® FilTek XL	85–95%	90%	90%
16 Miller® FilTek XL	95%	90%	90%
Percentage of Weld Fume Particle Size <sup>3</sup>	75–95%	15%	10%

<sup>1</sup>American Society of Heating, Refrigeration and Air Conditioning Engineers (ASHRAE) 52.2

<sup>2</sup>National Air Filtration Association (NAFA) Guide

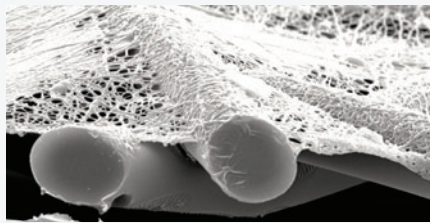
<sup>3</sup>Jenkins, Pierce, Edgar, Particle Size Distribution of GMAW and FCAW

Filter Media Type	Weld Fume Capture Efficiency	Pressure Drop	Relative Cost
Cellulose	Very Low	Low	\$
Cellulose Blend	Low	Moderate	\$
Spunbond Polyester	Moderate/high	High	\$\$\$
Meltblown Composite	High	High	\$\$
Miller FilTek XL	High	Low	\$\$

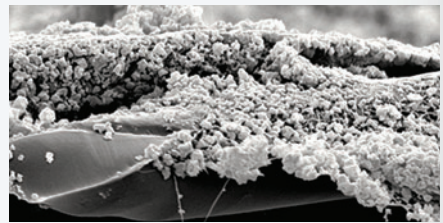
FilTek XL filters provide high efficiencies and low operating pressure to out-filter, outperform, and outlast all the rest.

## Not Just Filters — FilTek XL Filters

The FilTek XL filter media design results in extended filter life, higher efficiency and stronger suction, resulting in a cleaner work space and improved weld fume capture. Filter media from FilTek XL high-volume filters are made up of a durable substrate with an engineered fiber designed to capture even the smallest of weld fume particles, while maintaining the highest level of efficiency.



Clean FilTek XL media



Surface loaded FilTek XL media (substrate still clean)

# Workstations

## Disposable and self-cleaning filter models available.

Note: Upgrade to self-cleaning models with high arc on time, extracting from heavy fume processes, or when welding aluminum or galvanized materials. Self-cleaning models are also recommended for most dual-arm applications.



**NEW!** Pre-assembled arms for easy setup.

**Durable bellmouth-shaped hood** features a convenient 360 degree rotation for unlimited positioning. One of the largest in the industry, FILTAIR's extraction hood captures weld fumes at a greater distance from the source than other hood designs. This also means less hood adjustments for longer welds.

**Easy-to-operate extraction arm** with external adjustments so air can pass through with less airflow resistance, giving you stronger CFM (airflow). It offers reliable and accurate positioning across the full range of motion of the arm, as well as easy adjustment and maintenance to ensure long-lasting operation. Pre-assembled extraction arms are available in 7-, 10- and 12-foot lengths.

### Package comes complete with:

- SWX filter cabinet
- High-efficiency filter
- Arm (choice of 7, 10, or 12 ft.)
- 115 VAC blower
- Mounting bracket for blower/arm
- Flexible duct (7 x 37 in.)
- 115 VAC on/off control box
- 115 VAC cleaning control box (self-cleaning model only)

Note: 115 VAC wiring not included.

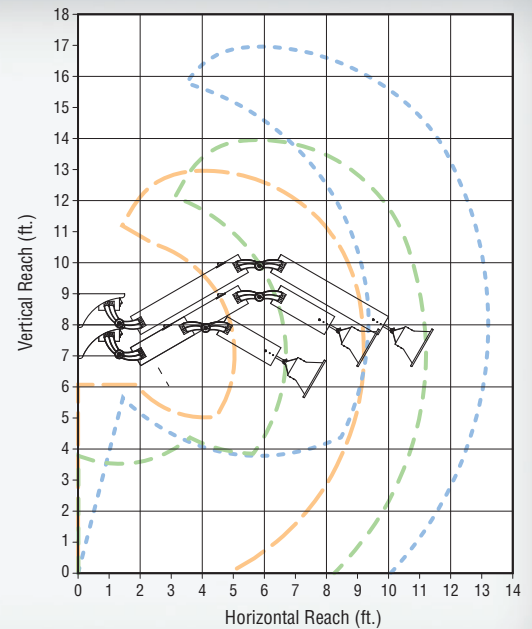
### Make it a dual-arm system. Package add-on comes complete with:

- Arm (choice of 7, 10, or 12 ft.)
- 115 VAC blower
- Mounting bracket for blower/arm
- Flexible duct (7 x 37 in.)
- 115 VAC on/off control box
- Backdraft dampers

Note: 115 VAC wiring not included.

## Extraction Arm Coverage Area

- 7-ft. Extraction Arm  
Min. ceiling height: 12.33-ft. (3.8 m)
- - - 10-ft. Extraction Arm  
Min. ceiling height: 13.33-ft. (4.1 m)
- · · 12-ft. Extraction Arm  
Min. ceiling height: 14.33-ft. (4.4 m)



## Specifications (Subject to change without notice.)

Filter Media	Accu-Rated™ Airflow	Extraction Arm Diameter	Sound Level	Motor	Power	Approximate Wall Space Needed	Dimensions	Net Weight
490 ft. <sup>2</sup> (45.52 m <sup>2</sup> )	875 CFM (413 L/sec.)	8 in. (203 mm)	Approx. 75 dBA at 5 ft. (1.5 m)	1 HP, 3450 RPM	115 V/ 1-Phase/ 60 Hz at approx. 11.9 A	<b>Single-Arm</b> H: 5.83 ft. (1.78 m) W: 6 ft. (1.83 m) <b>Dual-Arm</b> H: 5.83 ft. (1.78 m) W: 10 ft. (3 m)	H: SWX-D: 29 in. (737 mm) H: SWX-S: 33 in. (838 mm) W: 27.25 in. (692 mm) D: 33 in. (838 mm)	<b>SWX-D Cabinet:</b> 130 lb. (59 kg) <b>SWX-S Cabinet:</b> 195 lb. (88 kg) <b>Blower/Bracket:</b> 95 lb. (43 kg) <b>7-ft. Arm:</b> 52 lb. (23.6 kg) <b>10-ft. Arm:</b> 54 lb. (24.5 kg) <b>12-ft. Arm:</b> 59 lb. (26.7 kg)

# Genuine Miller® Accessories



**Replacement Filter**  
**#300 539**  
 Disposable  
**#300 540**  
 Self-cleaning (shown)



**SWX Hood Light with Arc Sensor**  
**#300 763** Field  
 The hood light with arc sensor illuminates the welding zone and enables the fume extractor to start automatically when welding begins.

automatically when welding begins.

## Ordering Information

Equipment and Options	Stock No.	Description	Qty.	Price
<b>SWX-D Single-Arm Packages</b>				
(Includes cabinet, high-efficiency filter, arm, blower, mounting bracket, duct, and on/off control box. 115 VAC wiring NOT included.)	<b>#951 513</b>	With 7-ft. extraction arm and disposable filter		
	<b>#951 514</b>	With 10-ft. extraction arm and disposable filter		
	<b>#951 515</b>	With 12-ft. extraction arm and disposable filter		
<b>SWX-S Single-Arm Packages</b>				
(Same as above plus self-cleaning control box.)	<b>#951 516</b>	With 7-ft. extraction arm and self-cleaning filter		
	<b>#951 517</b>	With 10-ft. extraction arm and self-cleaning filter		
	<b>#951 518</b>	With 12-ft. extraction arm and self-cleaning filter		
<b>SWX Dual-Arm Add-On Packages</b>				
(Includes arm, blower, mounting bracket, duct, on/off control box, and backdraft dampers. 115 VAC wiring NOT included.)	<b>#951 519</b>	With 7-ft. extraction arm		
	<b>#951 520</b>	With 10-ft. extraction arm		
	<b>#951 521</b>	With 12-ft. extraction arm		
<b>Base Components</b>				
SWX Cabinet	<b>#300 599</b>	With disposable filter		
	<b>#300 600</b>	With self-cleaning filter		
FEB-1	<b>#300 691</b>	Fume extraction blower — 1-horsepower		
SA-W807	<b>#300 980</b>	7-ft. extraction arm		
SA-W810	<b>#300 981</b>	10-ft. extraction arm		
SA-W812	<b>#300 982</b>	12-ft. extraction arm		
<b>Replacement Filters</b>				
Disposable Filter	<b>#300 539</b>			
Self-Cleaning Filter	<b>#300 540</b>			
<b>Accessories</b>				
SWX Hood Light with Arc Sensor	<b>#300 763</b>	Field		

Date:

Total Quoted Price:

**Please call toll-free 855-FILTAIR (855-345-8247) for information on fume extraction solutions.**

Distributed by: